

Q&A Ch-2

REVIEW QUESTIONS

MCQs:

1. a) In a germinating seed, the roots develop from:
ans- b) Radicle

b) In a germinating seed, the shoot develops from:
ans- d) Plumule

c) Which one of the following is a monocotyledonous seed?
ans- i) Maize

d) If the cotyledons are pushed above the soil, then such type of germination is called:
ans- i) Epigeal

e) If the cotyledons remain under the soil, then such type of germination is called:
ans- ii) Hypogeal

f) Pollen is produced in the:

ans - (v) Anther

g) Reproductive whorl of a flower are:

ans - (vi) Stamen and carpel

h) Which one of the following is a false fruit?

ans - (vii) Apple

i) In a seed food is generally stored in:

ans - (viii) cotyledons or endosperms.

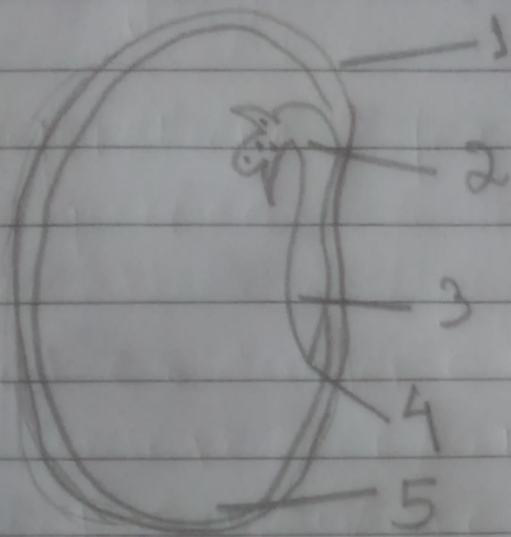
10/7/2021

CH 2

Date _____
Page 38

Short Answer Questions

1. Label the parts marked 1 to 5 and write their functions:



1. **Testa**: It is the outer exposed part of the seed.
2. **Plumule**: It is located between the two cotyledons and develop into a shoot.
3. **Radicle**: It is located between the two cotyledons and develops into a root.
4. **Micropyle**: It absorbs and allows as much water it is required for germination.

5. Cotyledon : It stores the food material which is used by the seedling for growth.

2. Name the following ?

(a) A seed which show hypogeal germination : Pea

(b) A monocot seed : Maize grain

(c) A dicot seed : Bean seed

(d) A seed which shows equal germination : Bean seed.