

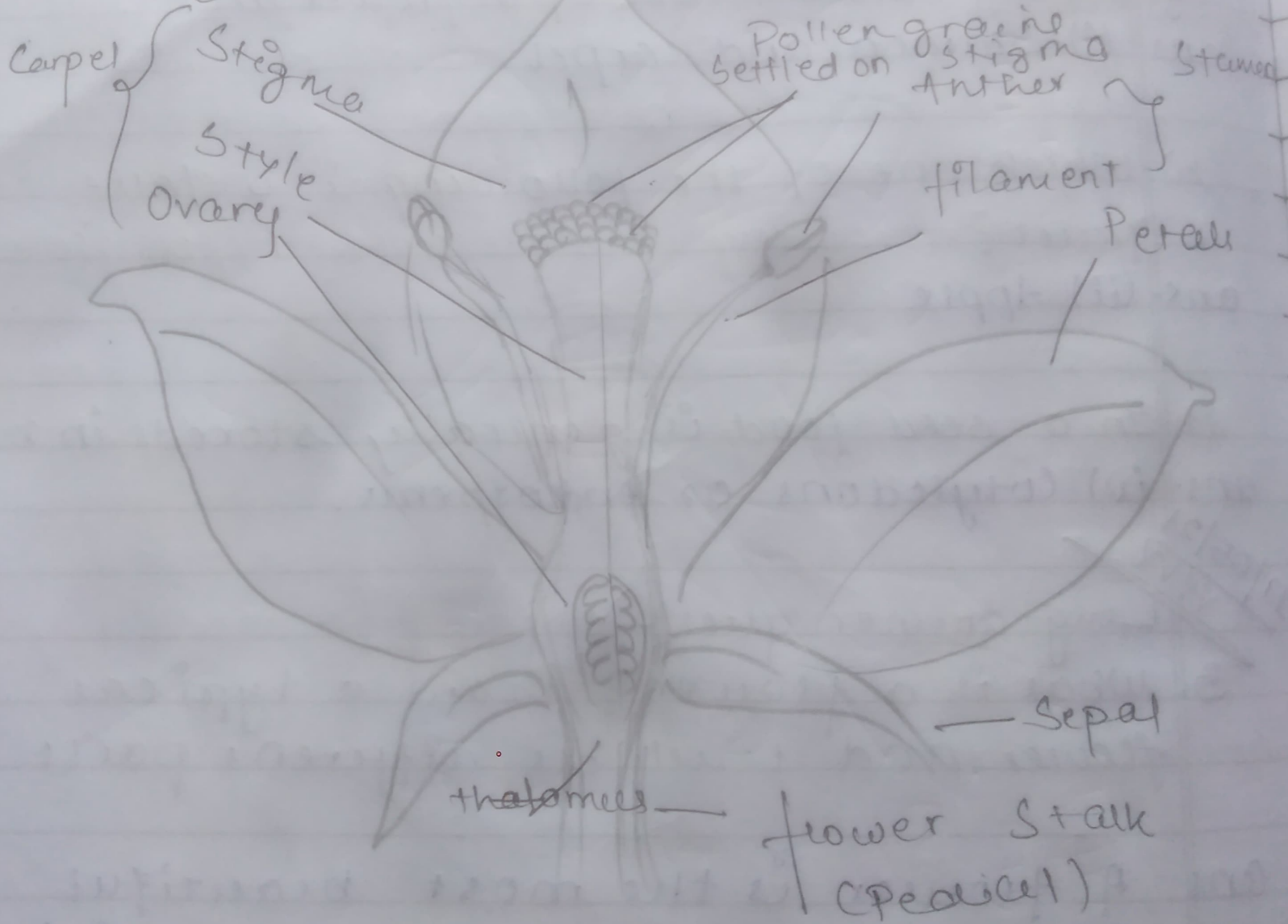
~~13/05/21
HW~~

Long answer ques:-

3. What is a flower? Draw a typical flower and label its different parts.

Ans A flower is the most beautiful and colorful part of a plant which serves as a reproductive organ.

Q3 -



8. State the location of the following in a flower.

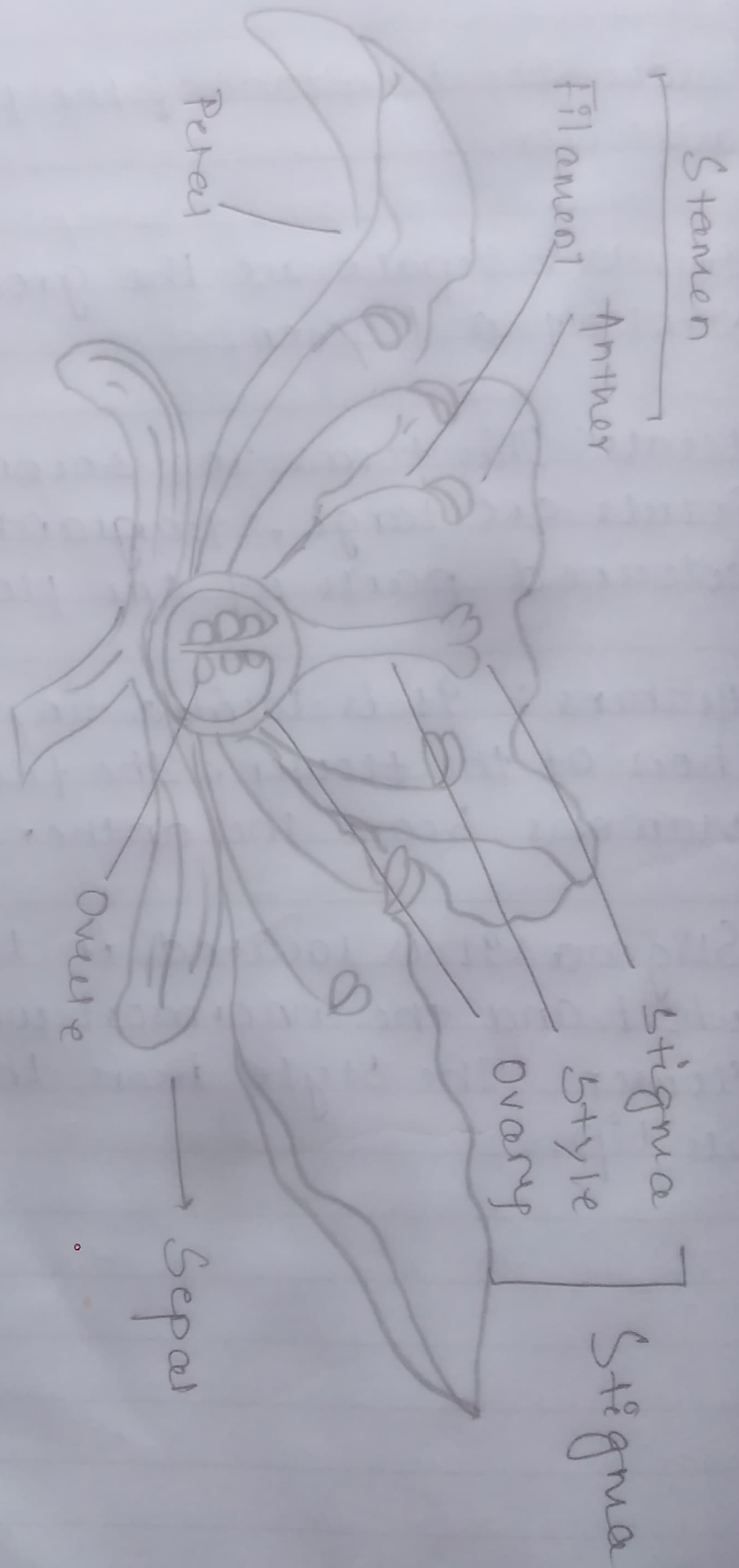
(a) Sepals: Sepals are the green outermost part of a flower.

(b) Petals: This forms the second inner whorl. Petals are large, fragrant and brightly coloured parts of the flower.

(c) Anthers: It is located in the third whorl of the flower. The filament of the stamens bears the anther at its tip.

(d) Stigma: It is located in the fourth whorl and the innermost whorl of the flower. The style bears the stigma at its tip.

Q 90



~~Amal~~
20/5/2021