

1. Put a tick mark (✓) against the correct alternative in the following statements

a) In a germinating seed, the roots develop from:

Ans-i) Radicles

b) In a germinating seed, the shoots develop from:

Ans-ii) Plumule

c) Which one of the following is a monocotyledonous seed?

Ans-iii) Maize

d) If the cotyledons are pushed above the soil, then such type of germination is called:

Ans-i) Epigeal

e) If the cotyledons remain under the soil, then such type of germination is called:

Ans-ii) Hypogeal

f) Pollen is produced in the:

Ans-iv) Anther

MEQs

vii) Reproductive whorl of a flower are:

Ans- a) stamen and carpels

viii) Which one of the following is a false fruit?

ans- b. Apple

ix) In a seed food is generally stored in

ans) Cotyledons or Endosperms.

Short Answer questions.

1. Giving below is a longitudinal section of a bean seed. Level ~~parts~~ marked 1 to 5 and right their functions.

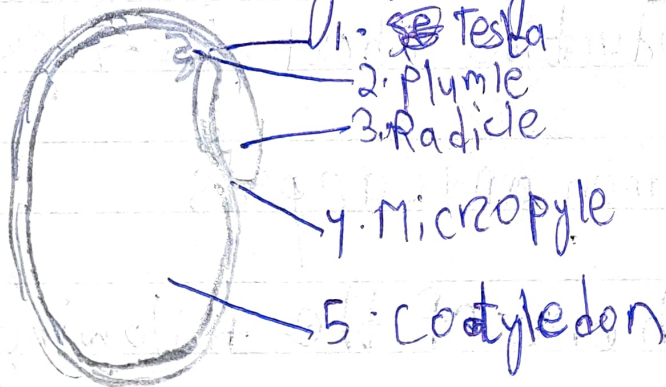
Ans- a. Testa: It is the outer exposed part of the seed.

b. Plumule: It is located between the two cotyledons and develops in to a shoot.

c. Radicle: It is located between the two cotyledons and develops in to a root.

d. Micropyle: It absorbs and allows the entry of as much as water as is required ~~for~~ for germination.

e. Cotyledon: It stores the food material which is used by the seedling for growth.



2. Name the following:

Ans - a) A seed which shows hypogeal germination. -----

Pea.

b) A monocot seed. ----- Maize grain

c) A dicot seed ----- Bean seed

d) A seed which shows epigeal germination. -----

--- Bean seed.