

HW  
8/10/21

Date \_\_\_\_\_  
Page 25

Q1 Draw the diagram of different type of Epithelial tissue and write their functions.

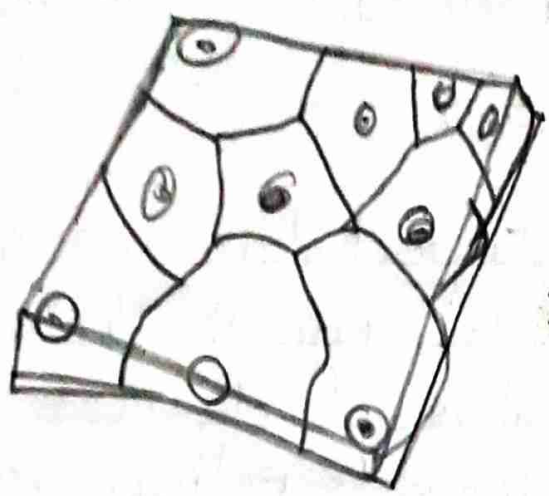
Ans)

Squamous epithelium - Its compact structure gives an impression like tiles on floor. It forms the delicate lining of (mouth, oesophagus), blood vessels etc.

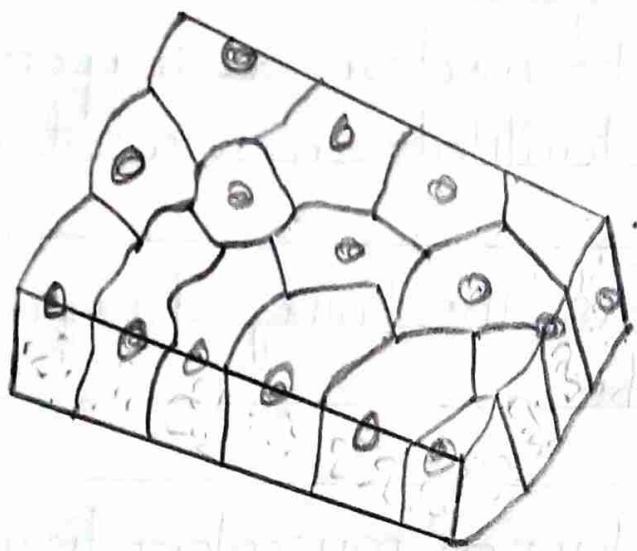
Cuboidal epithelium - It helps in secretion and absorption. It provides also mechanical support.

Columnar epithelium - It facilitates movement across the epithelial barrier.

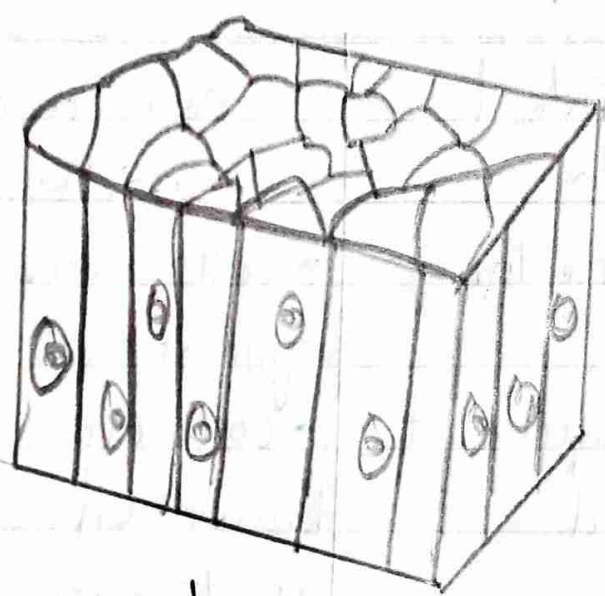
Ciliated epithelium - It forms the lining of nephrons, trachea and Fallopian tube.



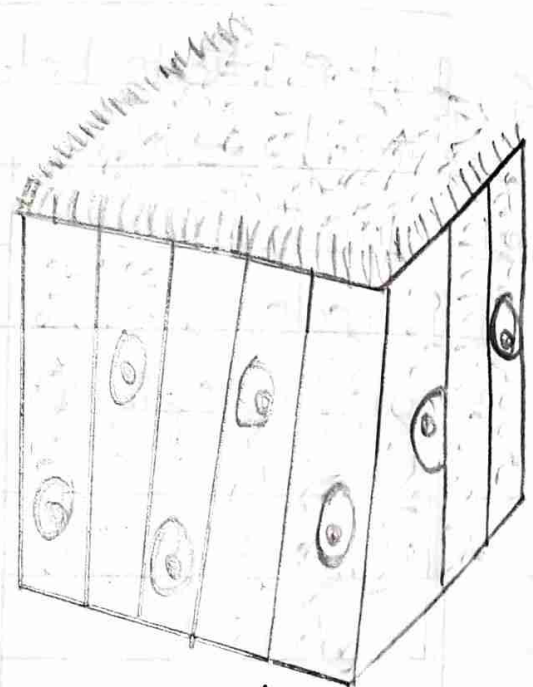
→ SQUAMOUS EPITHELIUM



→ CUBOIDAL EPITHELIUM



↓  
COLUMNAR EPITHELIUM



↓  
CILJATED EPITHELIUM

Q2. Differentiate between 3 type of muscular tissue structurally

Ans)

striated muscle

- cells are cylindrical
- cells are not branched.
- cells are multinucleated

unstriated muscle

- cells are long.
- cells are not branched
- cells are uninucleated.

cardiac muscle

- cells are cylindrical
- cells are branched
- cells are uninucleated.

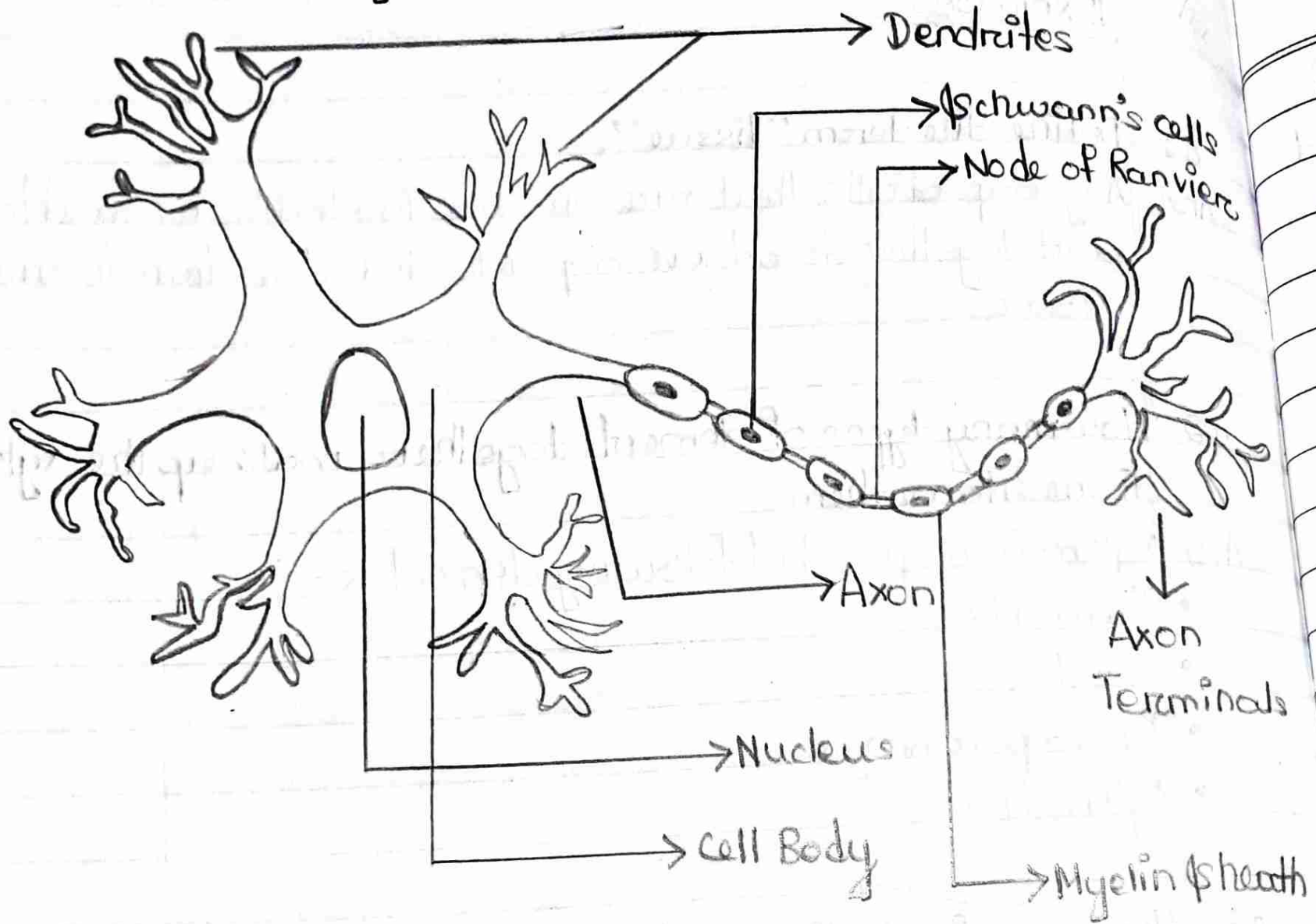
Q3. Draw the diagram of Nervous tissue and label it. Why Nervous tissues are longer in size than other tissues?

Ans) The major function of Nerve cells is to transform messages in the form of electrical impulses to diff. parts of the body. Nerve cells are long and have branches because they need more surface area to pass the signals to cell by cell.

Q. Draw the diagram of Nervous tissue.

Tissues

26



Structure of A Typical Neuron