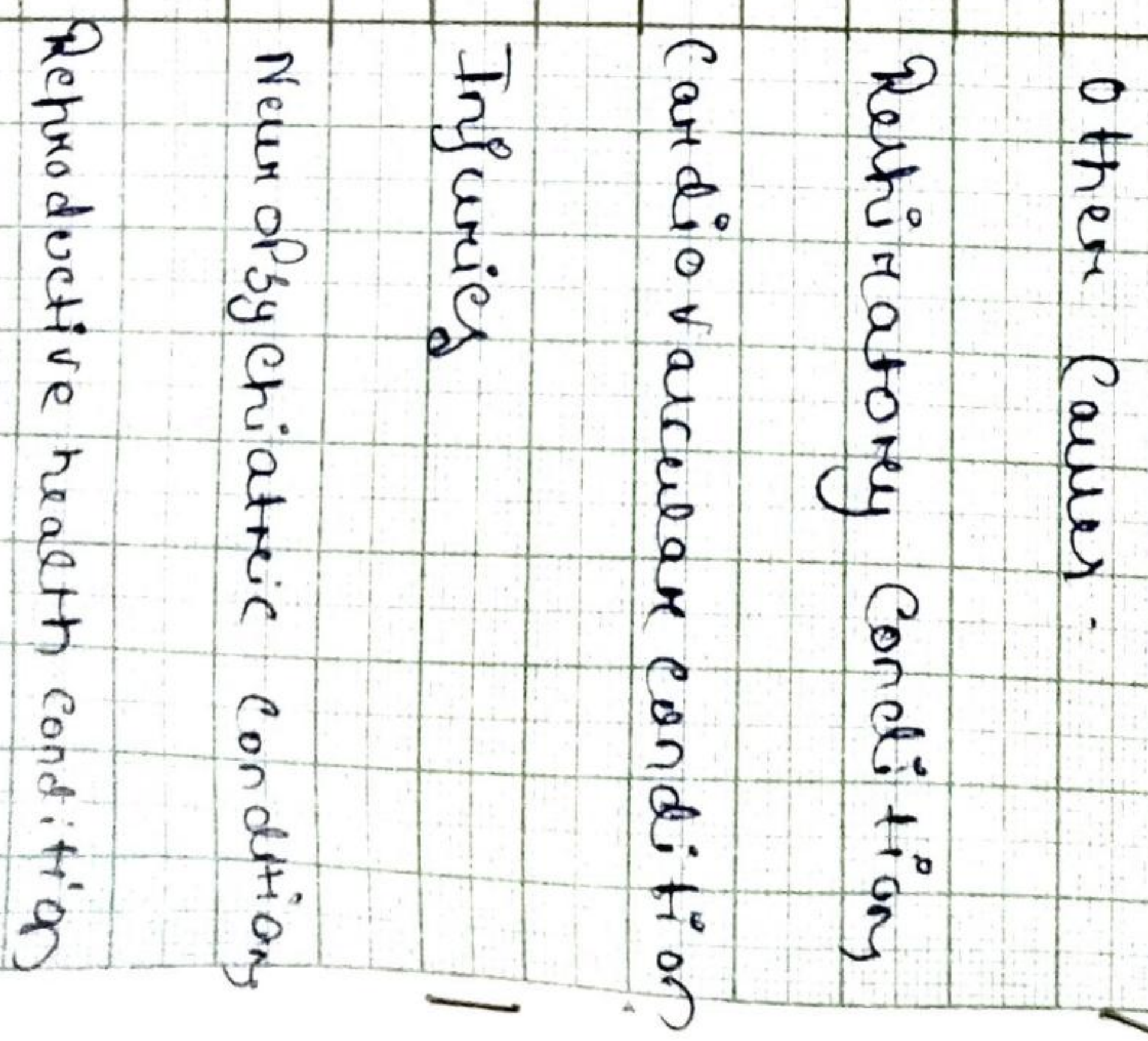


(C.11)
16/8/21

Ex-14.3

Q1)

32
30
28
26
24
22
20
18
16
14
12
10
8
6
4
2



- i) Survey conducted by an organisation for the cause of illness & death among the women between the ages of 15-44 (in years)
- ii) Reproductive health condition is the major cause of women's ill health & death worldwide.

2/2

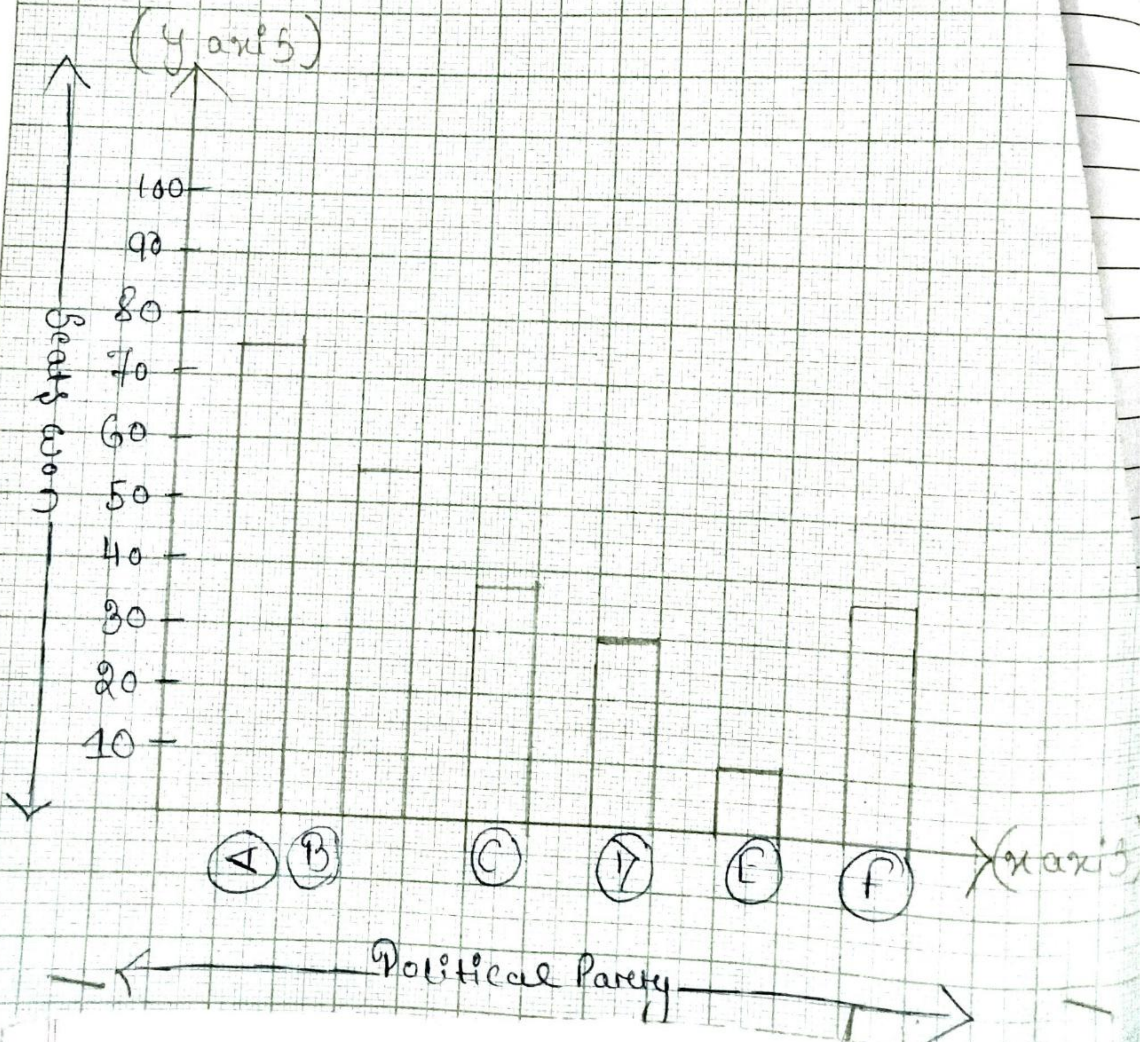


(i) To find number of girls per thousand boys in different sections of Indian Society.

(ii) Schedule tribe (ST) more number of girls are there.

3.

(3)



Date _____
Page _____

(c) Thrown in previous Page

(d) Political party: A: even the maximum number of seats,