



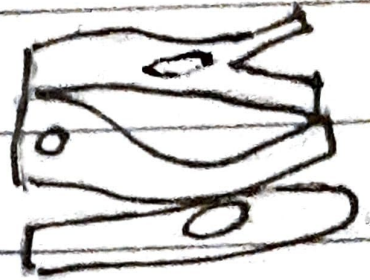
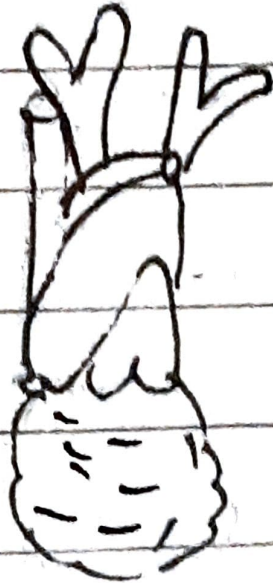


### 3. Cardiac muscles

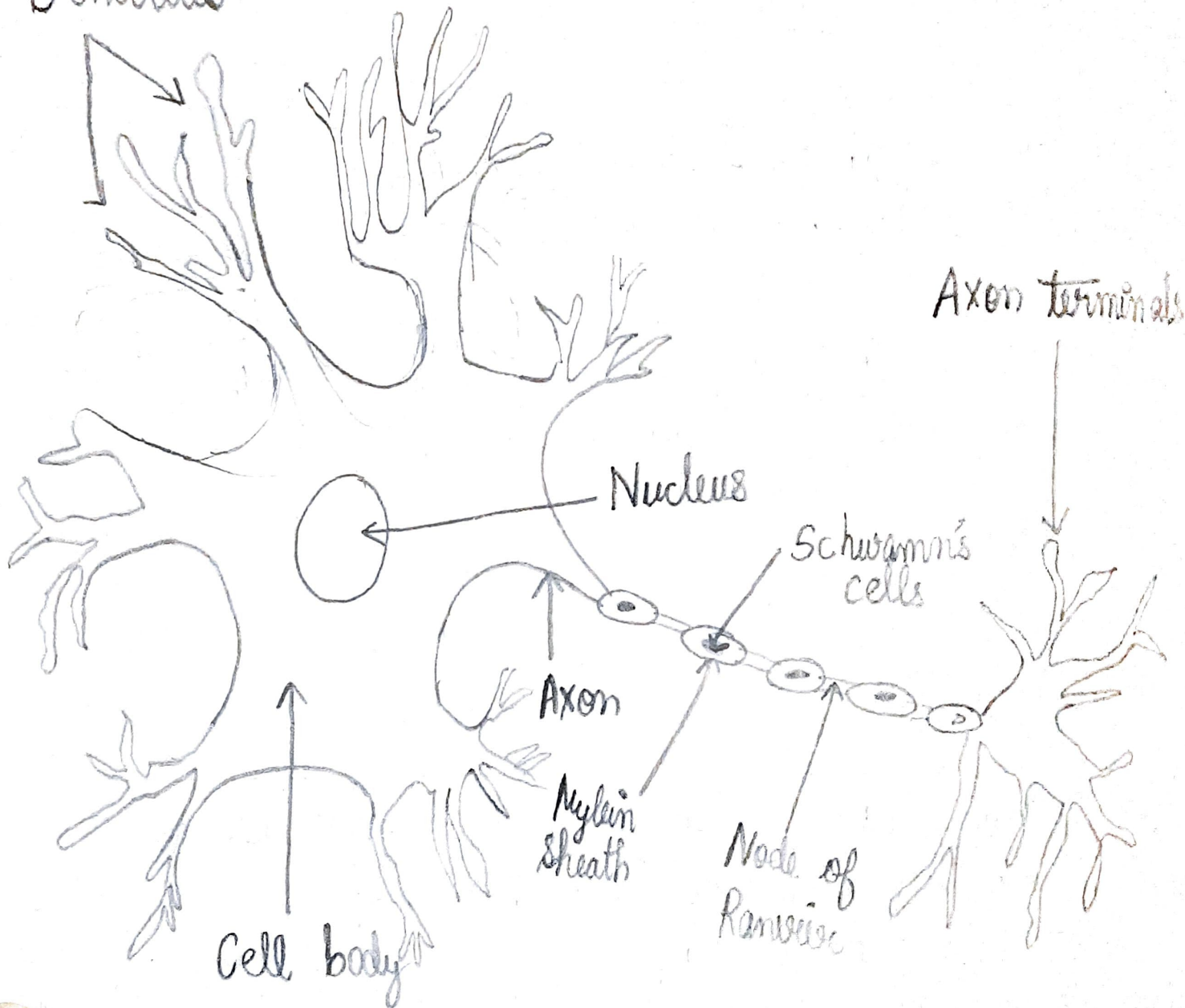
|                 | <u>Main Features</u>   | <u>Location</u>  | <u>Type of cells</u>   |
|-----------------|--|--|--|
| Skeletal muscle | <ul style="list-style-type: none"><li>• Fibres: striated, tubular and multi-nucleated</li><li>• Voluntary</li><li>• Usually attached to skeleton</li></ul>                       |   |   |
| Smooth muscle   | <ul style="list-style-type: none"><li>• Fibres: non-striated, spindle-shaped and uninucleated</li><li>• Involuntary</li><li>• Usually covering wall of internal organs</li></ul> |  |  |

## Cardiac muscles

- Fibres: striated, branched and uni-nucleated
- Involuntary
- Only covering walls of heart



Dendrites



Structure of Neuron