

H.W [6/10/2021]

1. Types of epithelial tissues are:—

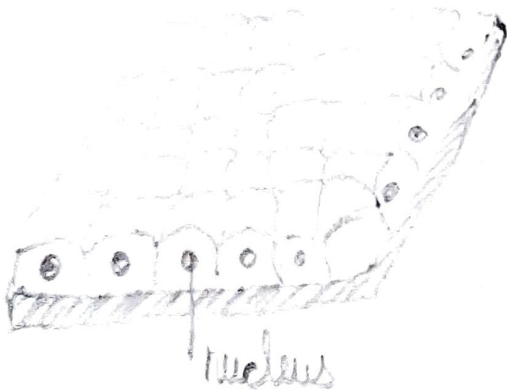
Simple Squamous Epithelium

Functions: diffusion, lubrication



Cuboidal epithelium

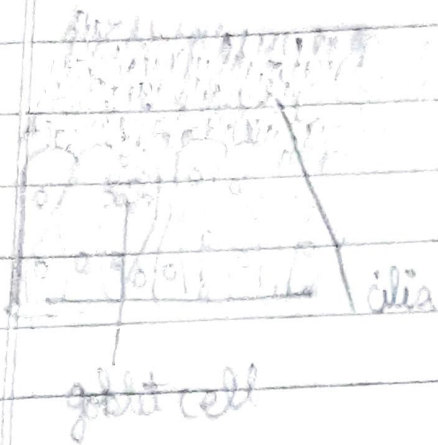
Functions: absorption, secretion



Columnar epithelium

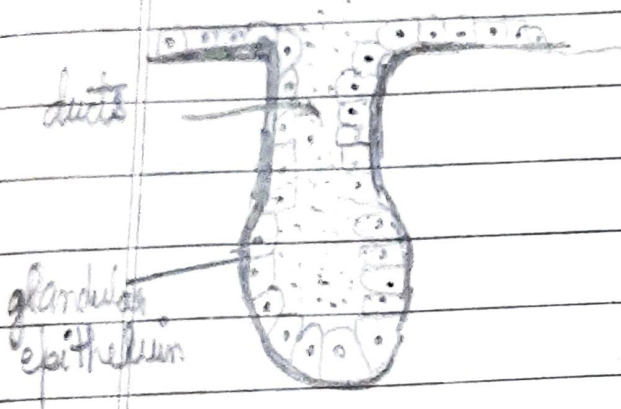
Functions: absorption, protection, secretion





Ciliated epithelium

Functions: absorption, secretion, transportation



Glandular Epithelium

Functions: Secretion

2. Types of Muscular tissue

1. Skeletal Muscle tissue:-

- These muscles are attached and help in its movement.
- They are voluntary muscles composed of the muscles.
- The cell of these tissues are ~~the~~ multinucleated.

2. Smooth muscle tissue:-

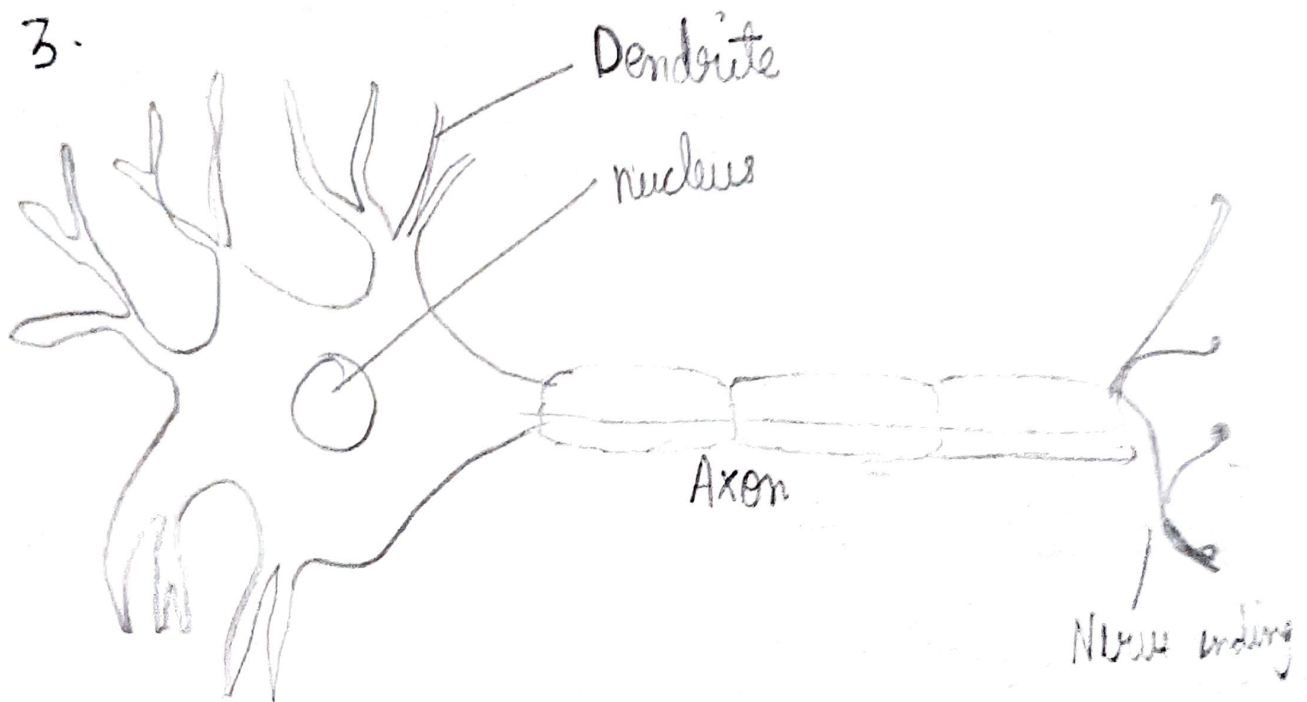
- These are non-striated, involuntary muscles controlled by the autonomous nervous system.

- The cells are spindle-shaped with a single nucleus.

3. Cardiac Muscle tissue:—

- These are found only in heart.
- These are involuntary muscles and the heart pumps the blood through cardiac contractions.
- They are single-celled and uninucleated.

3.



Nervous tissues are longer in size than other tissues because it is responsible for transmitting impulse over long distance from cell body.